

# OUTSIDE DROP OFF PROCEDURES



EXIT ONLY



THE NORTH ENTRANCE IS CLOSED TO INCOMING TRAFFIC

ONE WAY ONLY FROM YIELD SIGN TO MAIN STREET

If you have kids in Kindergarten and 1<sup>st</sup> grade drop them off by the flag pole area.

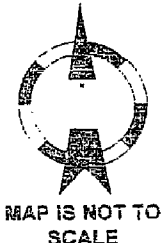
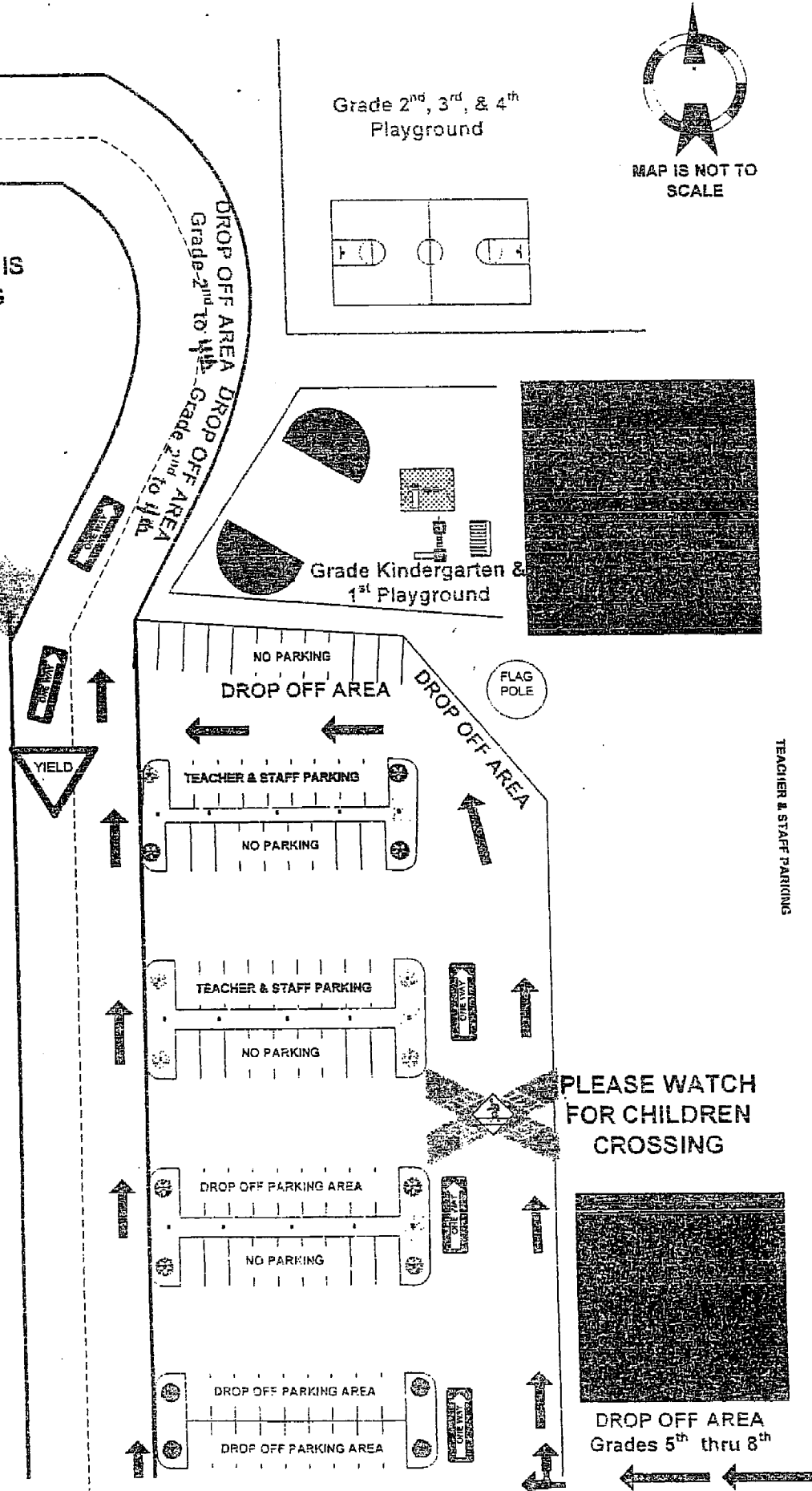
If you have kids in 2<sup>nd</sup>, 3<sup>rd</sup>, 4<sup>th</sup>

grade(s) you can just drive down Father Dwyer Road to their play area. You don't have to go by the flag pole.

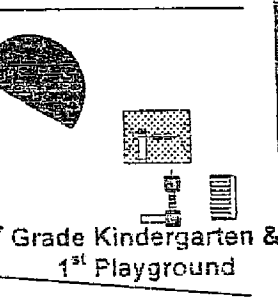
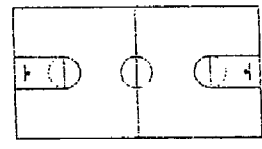
If you have kids in the 5<sup>th</sup>, 6<sup>th</sup>, 7<sup>th</sup>, or 8<sup>th</sup> grade(s) you can just drop them off in front of the church and they will take the path to the door to enter the school.

If you need to talk to a teacher or another parent please park in the Drop Off Parking Area so we don't block the flow of traffic in the Drop Off Area. This will also make it safer for our children.

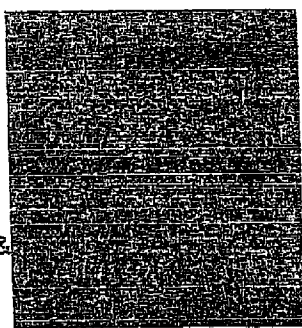
**ALL VEHICLES NEED TO ENTER THE PARKING/DROP OFF AREA FROM THE SOUTH ENTRANCE**



Grade 2<sup>nd</sup>, 3<sup>rd</sup>, & 4<sup>th</sup> Playground

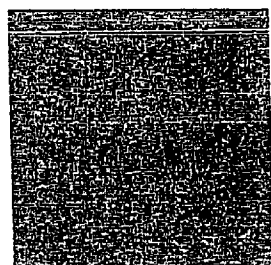


Grade Kindergarten & 1<sup>st</sup> Playground



TEACHER & STAFF PARKING

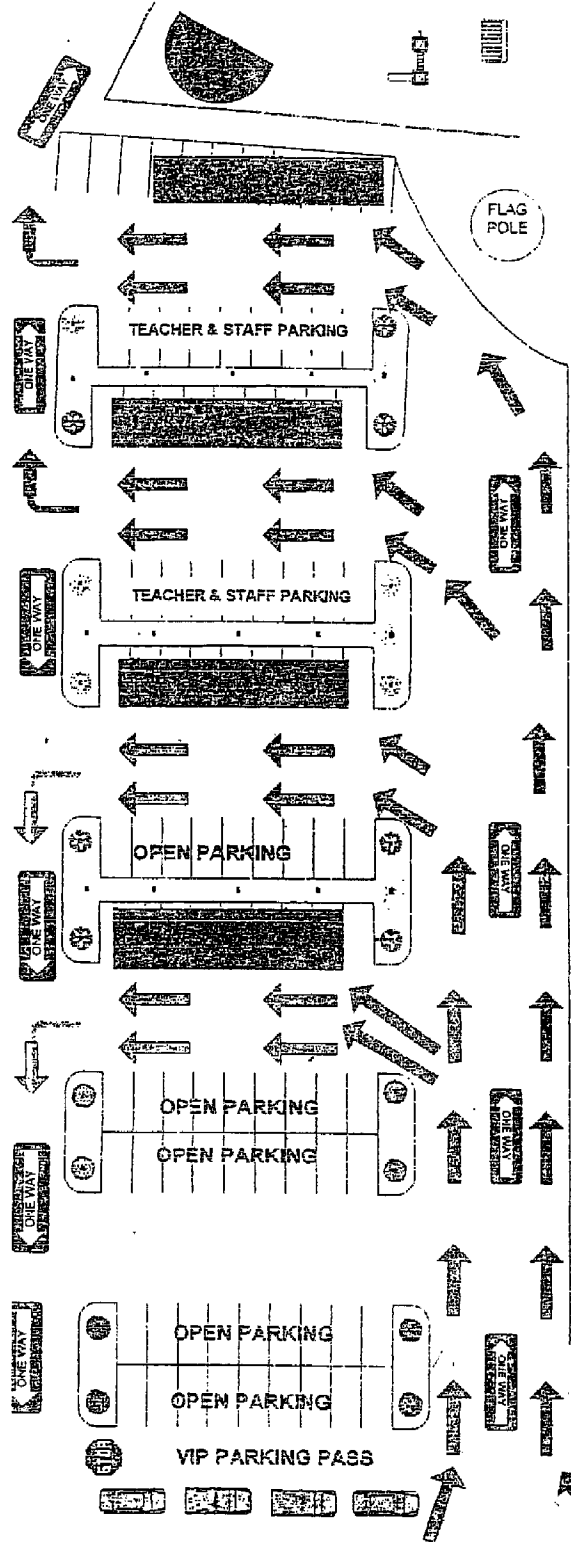
PLEASE WATCH FOR CHILDREN CROSSING



DROP OFF AREA Grades 5<sup>th</sup> thru 8<sup>th</sup>

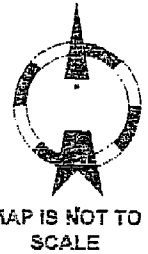


to SHIP TO  
VIC 8514  
SOY

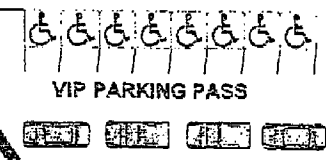
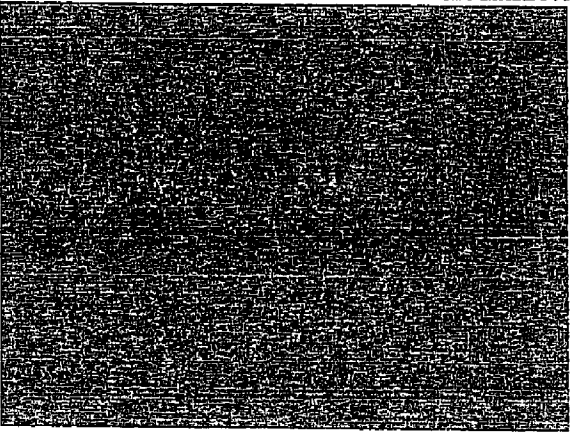


IF YOU HAVE MORE THAN ONE CHILD,  
THE OLDEST CHILD WILL WAIT WITH  
THE YOUNGEST CHILD IN THEIR  
SAFETY ZONE FOR PICKUP.

THE ABOVE ALSO APPLIES TO THE  
FOLKS WHOSE CHILDREN CAR POOL.



THE OPEN PARKING SPACES  
ACROSS FROM THE SAFETY  
ZONES FOR GRADES 2, 3 & 4  
WILL BE CLOSED DURING PICK-UP. IF  
PARKED IN THIS OPEN PARKING  
SPACE DURING PICK-UP YOU  
WILL NEED TO STAY UNTIL  
DIRECTED BY A TEACHER TO  
LEAVE.



PARKING FOR  
GRADES 5<sup>th</sup>, 6<sup>th</sup>, 7<sup>th</sup>,  
AND 8<sup>th</sup> PICKUP

